



# GMT MONTHLY MEMBERSHIP PROGRESS REPORT

Results as of: 5/31/2019

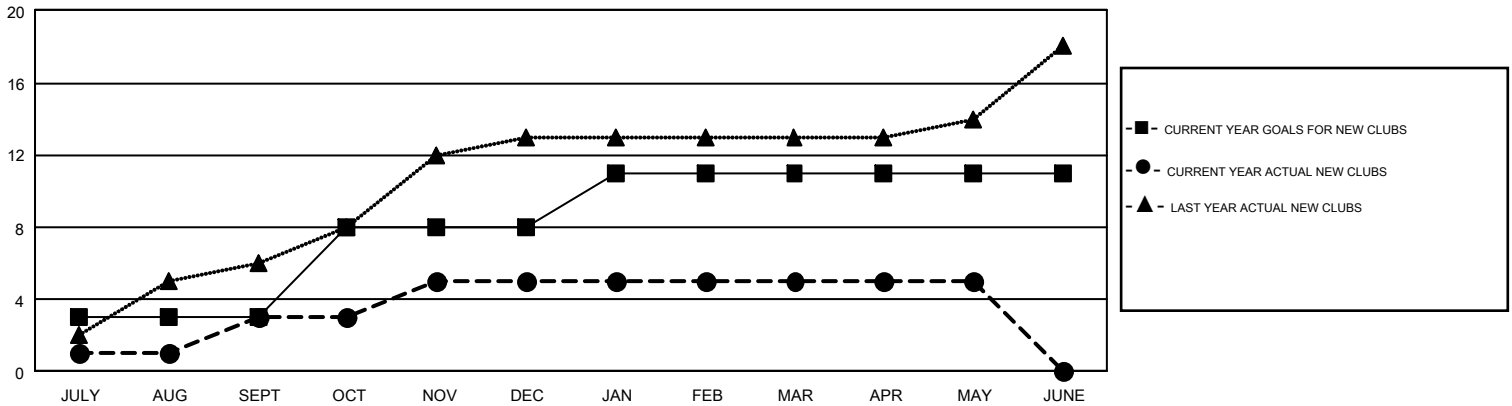
## GMT Constitutional Area 5, Group D

GMT: PRAYAT SIRINAPHAPHAN

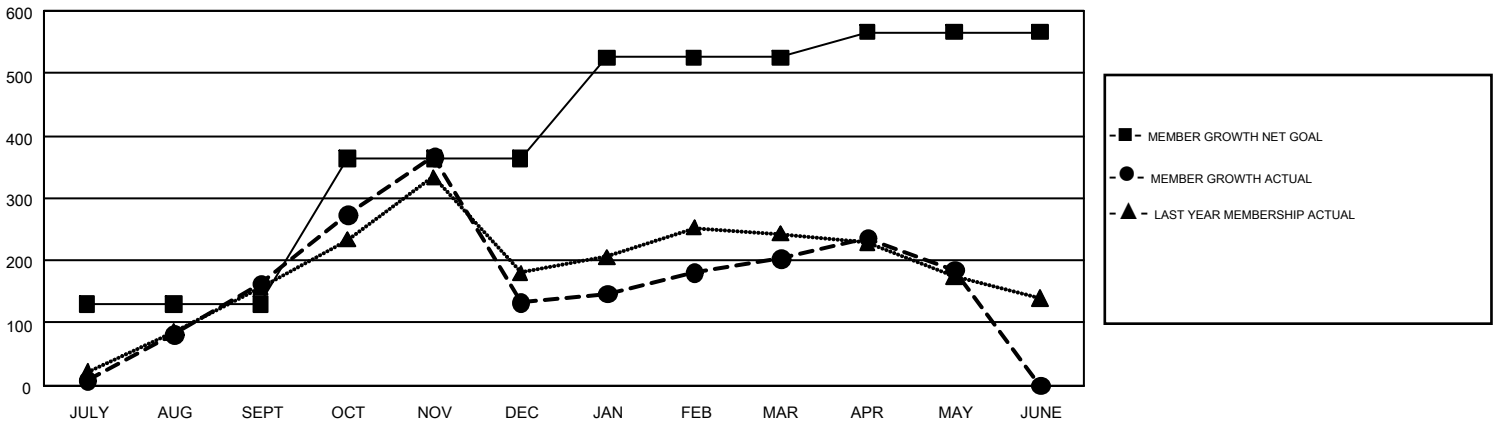
REPORT DOES NOT INCLUDE CLUBS IN UNDISTRICTED AREAS.

Clubs				Members			
RESULTS FOR 2018-2019				RESULTS FOR 2018-2019			
QUARTER	NEW CLUB GOAL	NEW CLUBS	DROPPED CLUBS	QUARTER	MEMBER GROWTH NET GOAL	MEMBER GROWTH ACTUAL	DROPPED MEMBERS ACTUAL (including transfers)
JULY/AUG/SEPT	3	3	1	JULY/AUG/SEPT	130	292	98
OCT/NOV/DEC	5	2	4	OCT/NOV/DEC	234	367	364
JAN/FEB/MAR	3	0	0	JAN/FEB/MAR	161	144	57
APR/MAY/JUNE	0	0	0	APR/MAY/JUNE	41	106	119

GOALS AND ACTUAL NEW CLUBS CUMULATIVE



GOALS AND ACTUAL MEMBERS CUMULATIVE



DROPPED CLUBS: 5	143 CLUBS OF 295 ADDED 1 OR MORE NEW MEMBERS	<b>GENDER DISTRIBUTION</b> MALE 4,373 (53.56%) FEMALE 3,792 (46.44%)
<b>DROPPED MEMBERS</b> DECEASED 29 CLUB CANCELLED 45 OTHER 564 <b>TOTAL 638</b>	<a href="#">CLICK HERE FOR CUMULATIVE MEMBERSHIP DATA</a>	TOTAL FAMILY UNIT MEMBERS 445 FAMILY MEMBERS PAYING HALF DUES 236